

REVISIONS		Description
No.	Date	

Drawing Title:  
BUILDING 2 -  
ELEVATIONS

Scale: As Noted  
Project No: 25046  
Date: 11/06/2025

Principal: CSM  
Project Director: MB  
Project Manager: MB  
Drawn by: PC  
Checked by: MB

Sheet No.  
A-2.20

## GENERAL ELEVATION NOTES

- PROVIDE MEDIUM TEXTURED COAT XL-70 OR APPROVED EQUIVALENT EXTERIOR WALLS EXCEPT DOCK AREA WALLS. ACCENT COLORS AND DOCK AREA WALLS TO BE PRIMED AND HAVE TWO (2) COATS OF COMMERCIAL QUALITY GRADE LATEX PAINT. WHERE DARK COLORS ARE USED, PROVIDE SATIN FINISH LATEX.
- MISCELLANEOUS METALS INCLUDING EXTERIOR EXPOSED METALS (I.E. HANDRAILS, LADDERS, BOLLARDS) TO HAVE ONE (1) COAT OF PRIMER AND TWO (2) COATS OF COMMERCIAL QUALITY ENAMEL PAINT.
- CONTRACTOR TO PROVIDE SAMPLES OF COLORS OF ACTUAL BUILDING FOR OWNERS FINAL REVIEW.
- REFER TO ELECTRICAL PLAN FOR LIGHT FIXTURE SPECIFICATIONS.
- RETURN ALL REVEALS AT PANEL OVERLAP. TYP. REFER TO ENLARGED ELEVATION FOR COLOR PLACEMENT.

## GENERAL NOTES

- ALL CONCRETE WALLS TO BE TREATED WITH TEXTCOE MEDIUM TEXTURE.
- ALL STOREFRONT TO BE CLEAR ANODIZED AND GLAZED PER MIAMI-DADE REQUIRED HURRICANE RESISTANCE WITHOUT THE USE OF SHUTTERS.
- ALL FUTURE TENANT SIGNAGE TO BE PERMITTED SEPARATELY.
- 6" TALL WHITE ADDRESS NUMBERS ARE TO BE PLACED OVER EVERY TENANT ENTRANCE PER FLORIDA FIRE PREVENTION CODE.

## KEYNOTE LEGEND

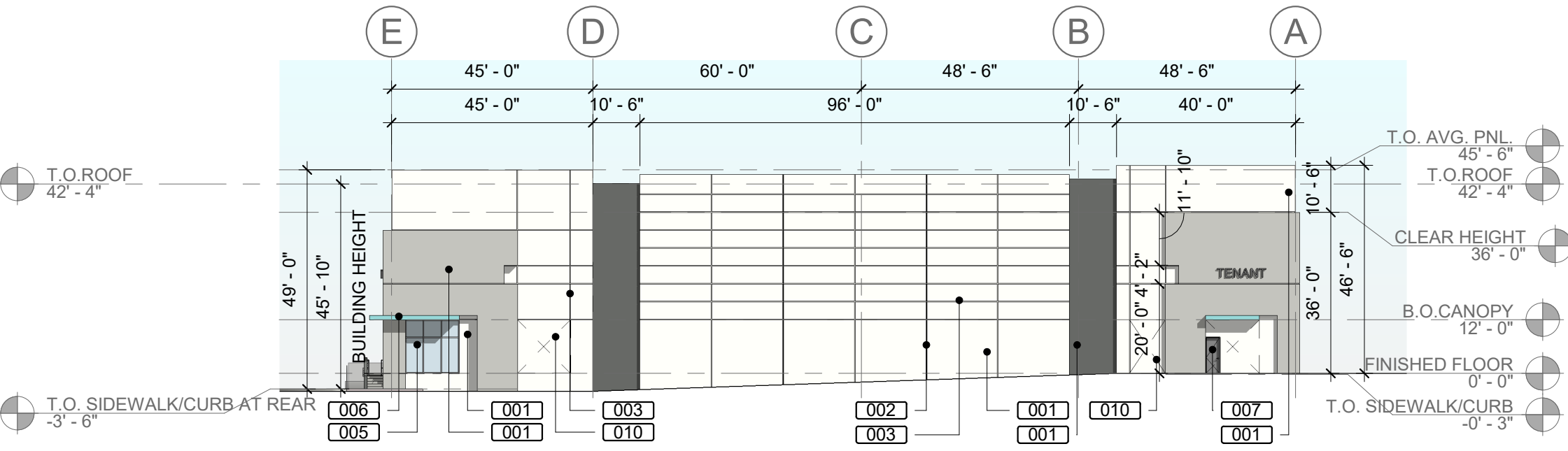
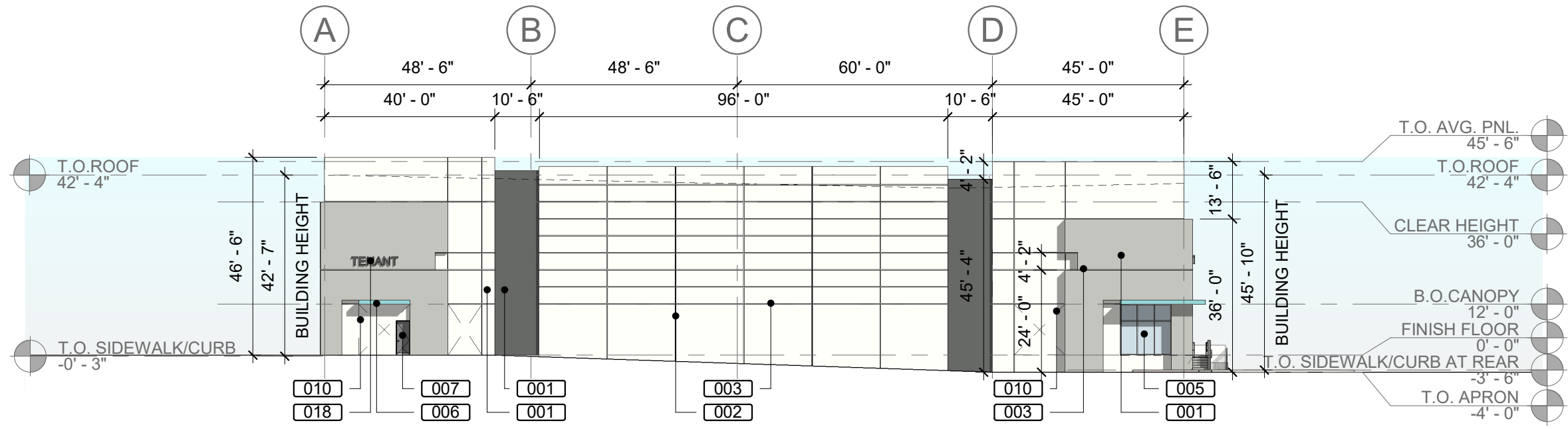
- |     |   |
|-----|---|
| 001 | TILT-UP CONCRETE WALL (TYP. PAINTED)                          |
| 002 | PANEL JOINT   |
| 003 | 2" REVEAL PATTERN   |
| 005 | TINTED GLASS IN IMPACT RESISTANT ALUMINUM STOREFRONT SYSTEM   |
| 006 | PAINTED CONCRETE CANOPY                                       |
| 007 | METAL MAN DOOR  |
| 008 | ALUMINUM CANOPY   |
| 009 | STEEL OVERHEAD DOOR   |
| 010 | KNOCK-OUT PANEL   |
| 011 | METAL COLLECTOR AND DOWN SPOUT (PAINT TO MATCH ADJACENT WALL) |
| 012 | EMERGENCY OVERFLOW SCUPPER                                    |
| 013 | STEEL LADDER AND CAGE WITH LOCKABLE GATE                      |
| 014 | 1" RECESS (PAINTED)   |
| 015 | CLERESTORY WINDOW   |
| 017 | RUBBER DOCK BUMPER (TYP.)                                     |
| 018 | TENANT SIGNAGE  |
| 019 | ALUMINUM POST AND PIPE RAILING                                |

## PAINT LEGEND

- |             |  |
|-------------|--|
| <div></div> | PT-1<br>SHERWIN WILLIAMS<br>SW 7757<br>HIGH REFLECTIVE WHITE |
| <div></div> | PT-2<br>SHERWIN WILLIAMS<br>SW 7065<br>ARGOS                 |
| <div></div> | PT-3<br>SHERWIN WILLIAMS<br>SW 7068<br>GRIZZLE GRAY          |
| <div></div> | PT-4<br>SHERWIN WILLIAMS<br>SW 9045<br>BORA BORA SHORE       |

NOTE:  
TO THE BEST OF THE ARCHITECTS KNOWLEDGE, THE PLANS AND SPECIFICATIONS COMPLY WITH THE APPLICABLE MINIMUM BUILDING LOCAL AUTHORITY IN ACCORDANCE WITH THIS SECTION AND CHAPTER 633 CODES AND THE APPLICABLE FIRE-SAFETY STANDARDS AS DETERMINED BY THE, FLORIDA STATUTES.

DRC SUBMITTAL  
12/17/2025

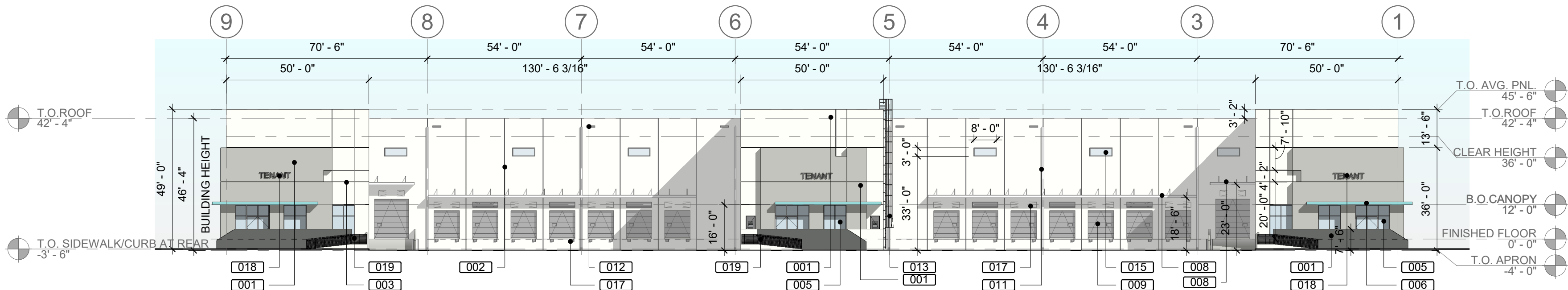


## 4 BUILDING 2 EAST ELEVATION

A-2.20 SCALE: 1" = 30'-0"

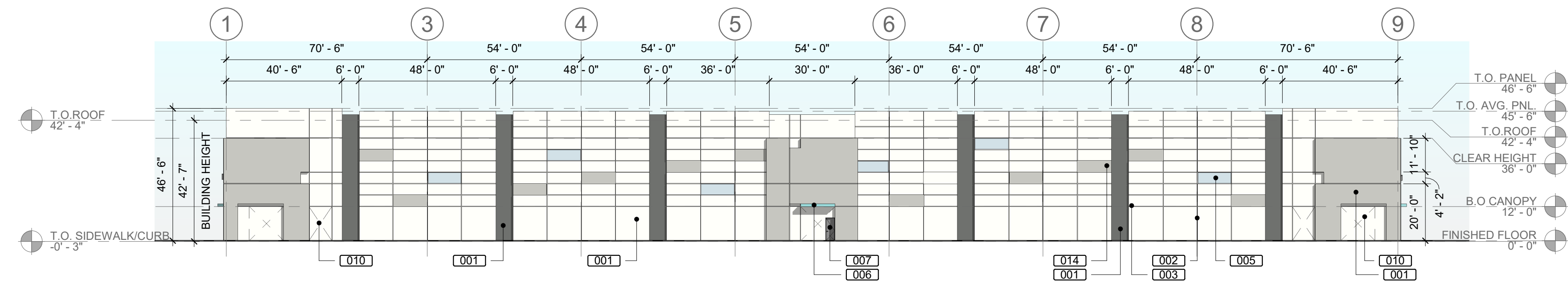
## 3 BUILDING 2 WEST ELEVATION

A-2.20 SCALE: 1" = 30'-0"



## 2 BUILDING 2 NORTH ELEVATION

A-2.20 SCALE: 1" = 30'-0"



## 1 BUILDING 2 SOUTH ELEVATION

A-2.20 SCALE: 1" = 30'-0"